




Magy_DIAMONDS

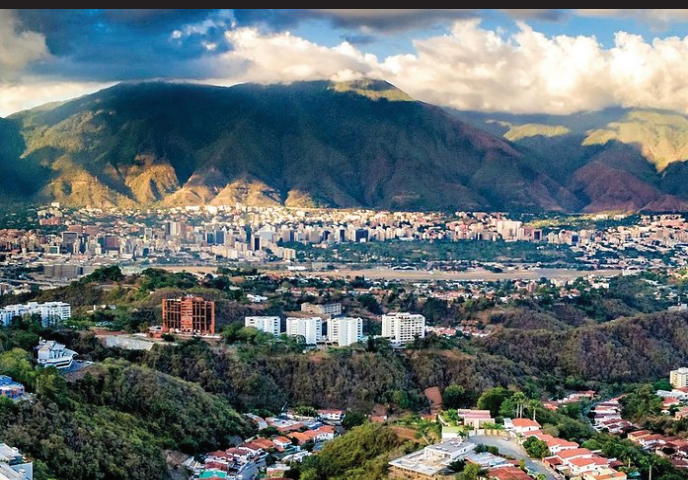
INTERNACIONAL C. A.

RIF.:J-411091162

Venezuela Cultura y Turismo Mineral Georgia



GRANITE
GRAVEL
GOLD
DIAMOND
KAOLIN



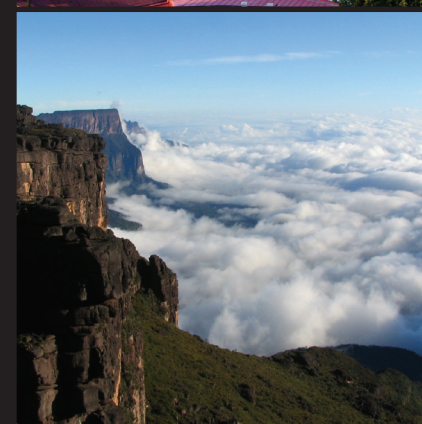
Alliance of integration between the Bolivarian Republic of Venezuela and the semi-presidential Republic of Georgia.

Alliance of the two countries, Venezuela and Georgia, demonstrated in its latest reports that the rise in its gross domestic product (GDP) is based on the sectors of mining, construction and trade.

This made up a growing percentage of the exchange between the two countries through private entities, VCTM-GEO International. ZM, C. A. was created particularly to serve as a platform for integration, and development both for the region of Bolivar State, specifically in The Empire Farm, to investment in the field of mining and machinery necessary for the development of projects in these areas.

Currently Venezuela explores new forms of sustainable development that allows the country to decouple some of the oil income, which has been one of the main activities of exploitation and export of the country, with the biggest reserves proven in the world and a production according to the report released by OPEC on April 13 affirms that, in accordance with the information provided by the Venezuelan authorities, the production in the country stood at the end of the first quarter of this year at an average of 2.53 million barrels per day, which translates into a decline of 4.6% compared to the average of 2.65 recorded by 2015. If only is observed March, the production that Venezuela reported to the OPEC is of 2.51 million of barrels daily, magnitude that represents a decline of 5.3% respect to the average of 2015.

This coupled with the fall in the price of crude oil worldwide, is considered to be a problem for a purely oil nation, however Venezuela has a number of features that very few countries in the world possess, their diversity of mineral and metal resources become an interesting trading partner for other Nations and private non-governmental entities which such as VCTM-GEO International. ZM, C. Are intended to produce and establish firmly on the international market with a product made in house.



page 1 Quarry for exploitation of red granite mora founded the empire.

page 2 Quarry the Empire township Heres.

page 4 General view explotation of granite.

page 5 Status of the land of the Empire farm.

page 6 Reconnaissance potential geological areas of gravel in the Empire farm.

page 8 Ring River "area of gold and diamonds".

page 9 Area N3.

page 11 Interpretation of the origin of the alluvium of gold and diamonds in the Ring River.

page 12 Presence of other minerals.

page 13 Conclusion.

page 14 A bit of Georgia y Venezuela.

EXPLOITATION OF GRANITE RED MORA FOUNDED THE EMPIRE

Bolivar State is characterized by a wide variety of minerals, many of them not yet quantified.

Within the framework of its functions:

VCTM-GEO International. ZM, C. A. it has deployed a series of studies to learn, qualitative and quantitative, so non-metallic minerals not reserved to the National Executive, under his administration, according to the Constitution of the Bolivarian Republic of Venezuela, specifically in the Empire farm

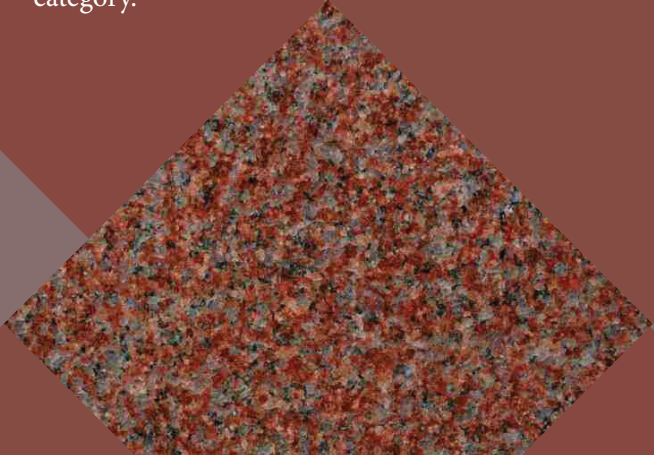
These include ornamental rocks, popularly known as granite. It is important to review that the Granites, from the point of view geological, are rocks igneous, of composition defined, but by custom, in the field of our incipient industry, is called so, this denomination involves to almost all them rocks ornamental, except for them marbles and schist.

As a result of the studies of exploration, that comes ahead of VCTM-Geo international. ZM C.A., have been quantified in the State, proven, probable and possible reserves, in the order of 6.100.000 cubic meters. Granitic rocks Type. Also, it is have given a 3 colors, which gives to the Empire farm, a great geodiversity in colors.

It is important to highlight that those colors are product of the weathering chemical of the minerals, which make up the rocks, as product of our tropical climate, associated to high temperatures and rainfall. In this sense, speaking in terms of strategic planning, these characteristics related to the potential and diversity of colors it makes granite a very important advantage for the State, and Venezuela.

The management that preceded us, tried to promote the idea of developing the industry of the granite by its potential, starting from the year 1,997, when the administration is delegated of the non-metallic to them governorates, occurs an impulse in the exploitation of Granites, but product of a lack of political linked to the aggregation of value, many of the blocks exploited were exported and usually returned as veneer polished with a high value. Finally, with our raw material we generated productive employment and development in other countries.

It is in the frame of this management, linked to the vision of VCTM-GEO International, ZM. C. A, implements an integration system to reverse the old practice of exploiting and exporting blocks, conforming us only with import products produced or processed in other countries. It is important to clarify that of a cubic meter of gross granite it can get 100 times their value in sheets (high generation of value added). In that sense, it has traced as fundamental objective to convert the Bolivar State and in particular to the Empire farm as the epicenter of the granite from the potentiality of said category.



QUARRY THE EMPIRE TOWNSHIP HERES

Status of the Award Empire:

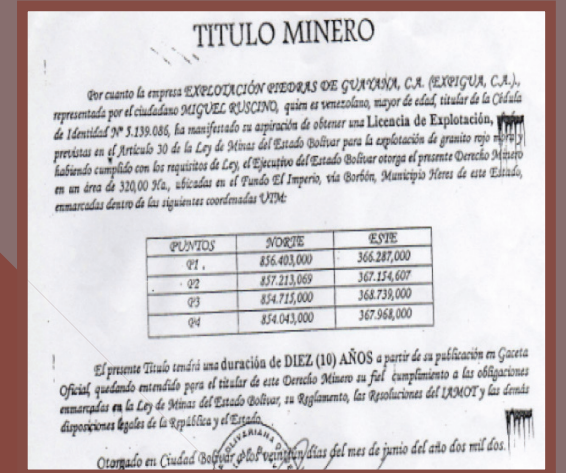
the concession was awarded to the company Expigua, CA and it was pierced by authorization of the IAMIB to Mr. Jose Alves de Almeida; currently arrangements were made for the renewal of the mining title for ten years, on behalf of the company VCTM-GEO International, ZM C. A.

Regime of TENURE of the land:

Privately owned VCTM-GEO, ZM C. A.

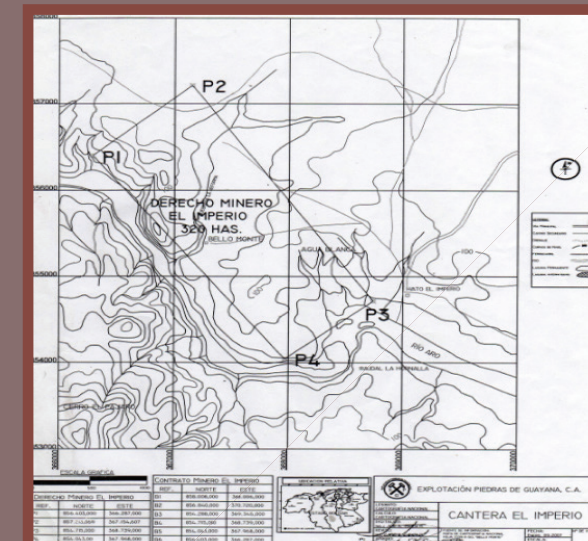
Situation of the title mining:

The title to exploit rock is in the process of renewal



Location of the mining right of the Empire quarry

The Empire farm is a land of private property with tradition, with an area of 1,250 hectares, located to banks of the ring river, to 20 kilometers of distance of the national road, city Bolivar-Maripá, to 08 kilometers of Bourbon population, and to 115 kilometers of the Bolivar city, in the southwest of the State Bolivar.



GENERAL VIEW

“EXPLOTATION AREA OF GRANITE”



BLOCKS OF RED MORA GRANITE IN COURTYARDS OF THE QUARRY

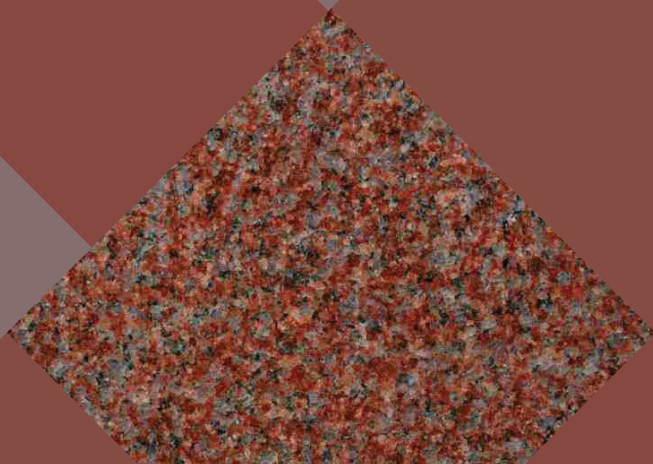


Potential Geo-mining of the granite quarry:

In the farm, there are numerous domes of granite which emerge in large extensions and heights. In those geological studies made in three (3) outcrops it has obtained the following results:

PROVED RESERVES:

- Dome 1: 2.000.000 cubic meters
- Dome 2: 1,800,000 cubic meters
- Dome 3: 2.300.000 cubic meters

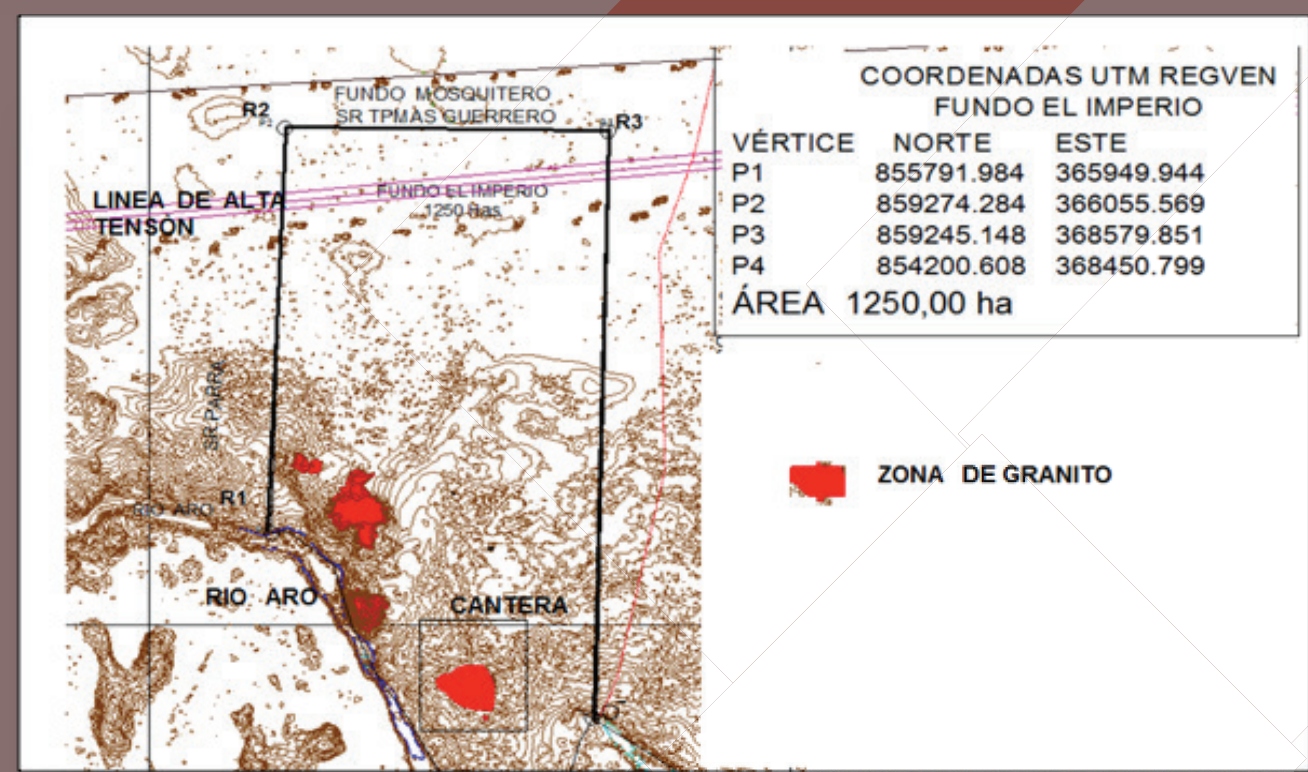


EMPIRE FARM

HERES MUNICIPALITY OF BOLIVAR STATE

Status of the land of the Empire farm

The document of the empire farm specifies that the area is 1250 hectares, which extends to the beaches of the ring river and according to the company VCTM-GEO International, ZM C. A.; these acres include a mountain of rocks parallel to the same ring river.



Orthoimage satellite to Radar scale 1:50000 of the Empire farm

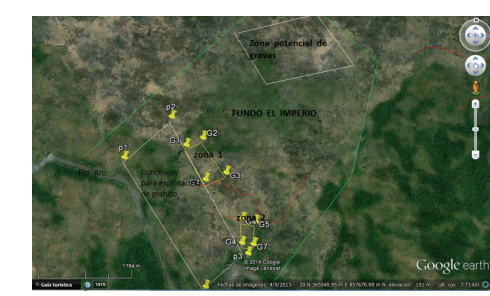
In them facilities of the Empire farm is made a recognition geological preliminary in where is observed extensive deposits of gravel that is found in the part this of the concession for the exploitation of Granites ornamental granted by the IAMIB in the Empire farm-

In the farm are located two areas of interest with deposits of gravels of granulometry rounded (egg of pigeon). The first area of an extension of 31,339 hectares is home to a potential of possible reserves in the order of 940.170 m3. Another gravel area delimited in an area of 9, 3096 hectares were estimated possible reserves in the order of m3 186.192.

In summary the volume total of the deposits of taxed classified in the category of reserves possible and is estimated en1.126.362 m3.

LOCATION AND ACCESS :

The Empire farm is located northwest of Ciudad Bolivar. Can be accessed via "troncal19". From Bolivar city you need to travel 100 km to get to the crossroads via Bourbon. From there, you travel approximately 12 km to the junction with the via "la mata Tapaquire". Then iterates through by an impaired paved about 5km which connects to a dirt road. Of this via of land is still in the address Southwest and is runs approximately 7,5 km to get to the Empire farm located on the edge of the ring river.



LOCAL GEOLOGY :

The granitic rocks are little Teutonized that belong to the complex of Imataca arising in the South part of the Empire farm always parallel to the ring Ro. The granitic rocks are massive red by the abundance of feldspar. They mineralogical consist of quartz, feldspar and biotitic scarce. This type of granite called commercially granite red Mora was exploited by the company Expigua, CA. However, the activity extractive of blocks trade of granite is found paralyzed.

Geomorphology:

In the area of the Empire farm displayed areas of elongated hills of granitic rocks adjacent to the river ring and a relief characterized by extensive rolling sheets covered with vegetation and herbaceous and Chaparral.

These lands have feasibility in some applications for agricultural purposes such as the breeding of cattle and livestock in general; of equal form is favorable for plantations of crops permanent (fruit, grasslands, tubers), that is adapted to them conditions agro-climatic and cultural of the area, being necessary make practices of management and conservation; in particular white-washed, fertilization, preparation of the land and planting.

Geographical extension:

The training table is extends by the plain Center-Oriental and Eastern (States Guárico, Anzoátegui, Monagas). Some outcrops are in the States of Sucre and Bolivar, immediately to the South of the Orinoco River.

Training table extends from North to South to the region of Moitaco. The river ring short them strata Sandy of the training table in the address South to North until the mouth of the river Orinoco. In the area of the empire farm the sedimentation of the training table extends to developing a relieve corrugated plane and were deposited unconformable on eroded Granites, the middle section of the training table is composed of a thick yellowish to reddish Sandy horizon little consolidated to be eroded by runoff waters forming gullies in the form of narrow valleys. Overlying the thick sandy layer, deposited extensive layers of gravel, which are exposed forming low hills of gentle slope, whose form of quartz particles are rounded, which indicates a long-haul transportation.

The areas potential of gravel

is delimited with the coordinates UTM REGVEN (table N° 1 and table N° 2).

Table N°1

Table N ° 1. Coordinates of the zone N ° 1 area 31,339 hectares

Punto	N	E
G1	856337.99	367263.41
G2	856480.69	367572.45
G3	855857.45	368054.53
G4	855707.31	367667.64



Zona potencial de grava ubicada al noroeste de la Concesión de granito ornamental.

The deposits of gravels are located in two areas adjacent to the area of the concession of granite. The first area was delimited in an area of 31,339 hectares (Figure 2). The volume of gravel in this first area of concentration was estimated at 940.170 m³, whereas an average thickness of 3 m.

Table N°2

Table N ° 2. Coordinates of the area N ° 2 area 9.3906 hectares

Punto	N	E
G4	855002.77	368402.98
G5	854965.28	368654.50
G6	854536.37	368640.77
G7	854549.63	368420.15

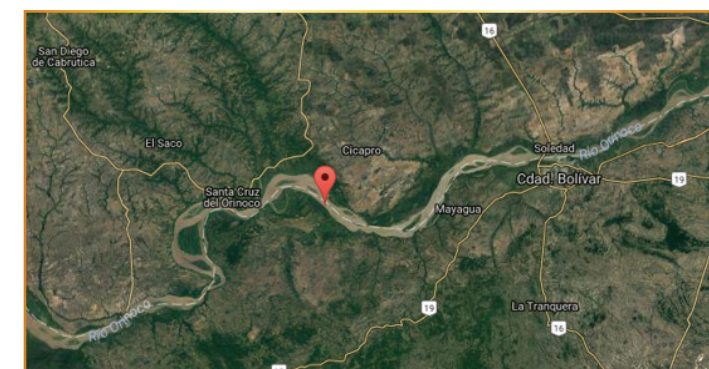


Zona potencial de grava ubicada al noroeste de la Concesión de granito ornamental

The second area is delimited in an area of 9,3096 hectares (Figure 3), this zone corresponds to a deposit of gravel of great thickness and the volume determined of the gravel was of 186.192 m³, whereas a thickness average of 7 m. Total reserves of gravel were classified as possible and were estimated by the order of 1.126.362 m³. Should be noted, that more to the Northeast very near the entry of the farm is a third area potential of gravel, which not is could access for its location and delimitation.



The Ring River is one of the South American Rivers occurring in the Bolivar State, Venezuela, formed by the confluence of the rivers Sucre, blue and Alachuela in the Orinoco-Guiana Shield. Flows in direction South-Northwest and South-North, its length is of about 150 km of length. Its tributaries include the rivers Camurica and Carapo and Carapo male. Is one of the tributaries that empty into the Orinoco River by its right margin, close to Bourbon about 80 km upstream from Bolivar City.



It is one of the diamond areas, located at a distance of 100 km west of Ciudad Bolivar. The diamond has been discovered since 1960 in alluvia deposited in the river ring, which are from the La Esperanza sector to the Bourbon industry. Of approval to official data the current production of the alluvium of the river ring diamonds does not really know. The province of Imataca which includes the basin of the river ring is dominated by gneises granite, quartzite and remnants of belts of rocks green. The reactivation of the fault of Guru to the South of the Empire farm caused the intrusion of dikes of kimberlitic of where is carry crystals of diamonds in the river ring and river Caroni. Floods diamondiferous and auriferous are deposited on a section of the river ring, located in the Empire farm with a length of 4km; these diamonds have been exploited with small mining dredges.



Dr Jean Pasquale showing specimen of crystals of diamonds of the Ring River

OBJECTIVE OF THE STUDY OF DIAMOND AND GOLD

The main objective of this work on the deposits of gold and diamonds in the basin low of the Ring River consisted in the interpretation of satellite image Landsat, Google Earth and orthoimage satellite to scale 1.50.000. The scope of this study was the following:

- 1 Carry out an interpretive study of satellite image of the Mineralogical integral supply of diamonds in the Ring River.
- 2 Evaluate the conditions of formation of the diamond.
- 3 Identify the possible primary source of deposits of pleasure in the Ring River in particular in the Empire Farm.

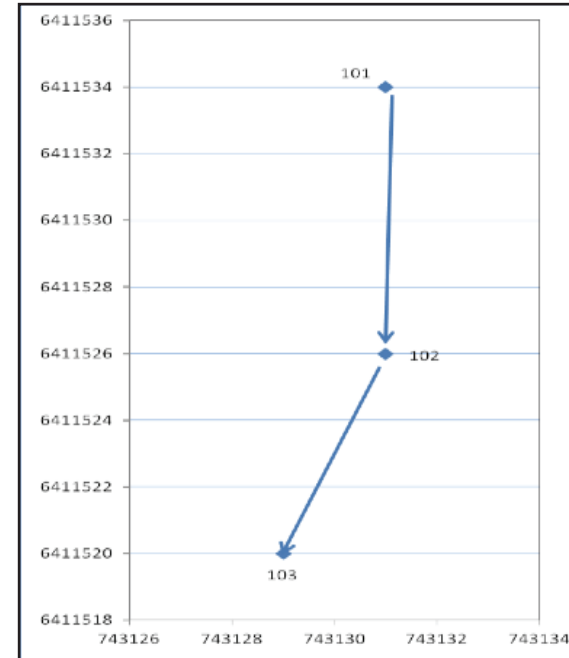


The area is located along the river of 3 to 4 meters of water, the line's edge (101-103) is lying by the shore Sandy with difference of heights, by the line to not more than 2 meters (brands absolute of 48 to 50 meters on the level of the sea). Earth shows the outputs of granite. Profile length is 44 meters.

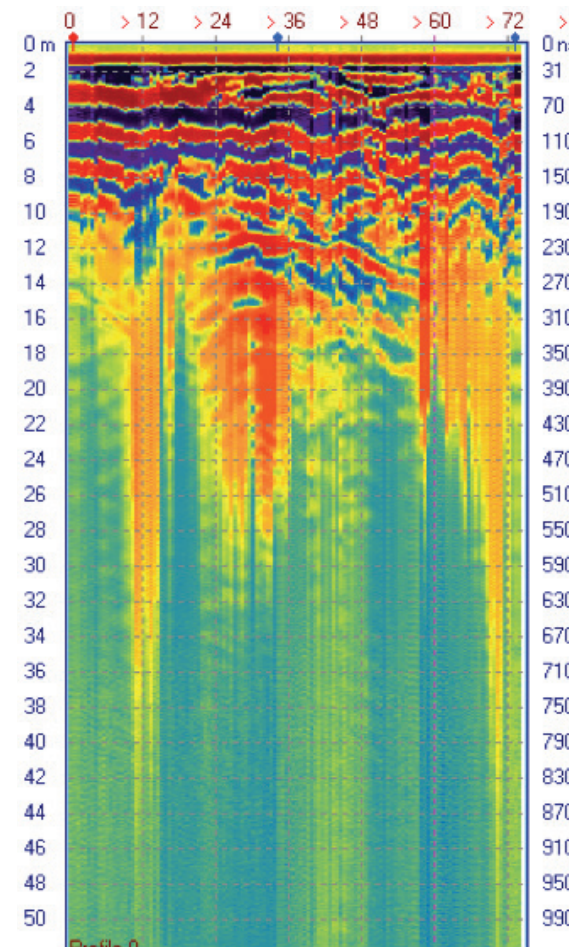
The general scheme of the Geo profiles available radar.



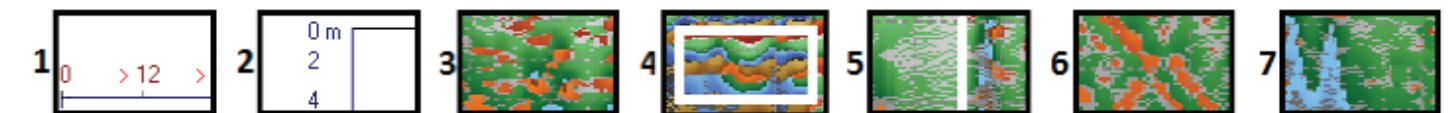
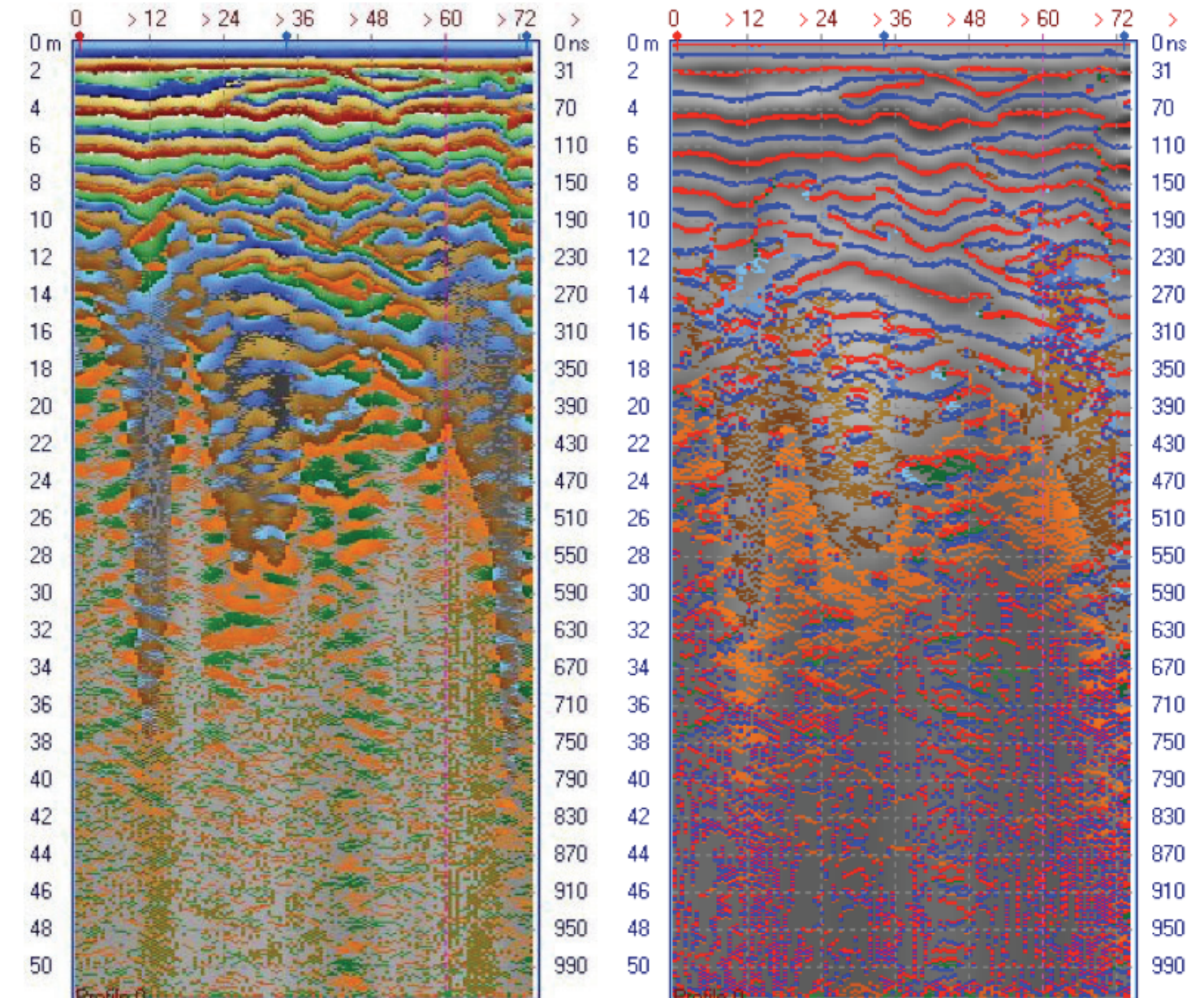
Photos of the area N3. Results of the measurements made on the profile are below. In the upper part of the Geo profile radar are the regular horizontal structures, which originated partially a reflection of the momentum that plumbs the border of the layer that contains moisture. On the profile 101-103 is observed two anomalies vertical, them violations hypothetically tectonic (the line of the breaking), and the horizon inclined that reflects located between the anomalies given.



The analysis of data of Geo radar (profile 101-103)



Profile 101-103 initial N3 data area



- 1 - address of the finish of the profile and its length in the meters
- 2 - scale from the depths in meters (the average speed per profile)
- 3 - top of the firm destroyed layers that get under.
- 4 - sub-horizons reflected of horizons GPR
- 5 - tectonic possible infractions (line break)
- 6 - tilted horizons that reflects
- 7 - physic- lithology heterogeneities

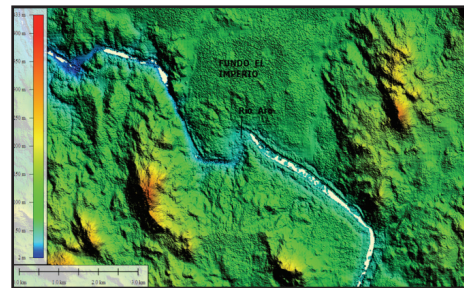
INTERPRETATION OF THE ORIGIN OF THE ALLUVIUM OF GOLD AND DIAMONDS IN THE RING RIVER

The origin of the crystals of diamond and particles of gold in the ring river has been little studied. Currently there are few works of prospecting to detail and there are no published works about the deposits of gold and diamonds on the quoted River. The Guri failure to the South of “The hope” is the main structure of trend structural N70 ° E, which is cut by the ring river in the Southeast direction to Northwest. During the orogeny Nickeriana, is originated disruption or rifting of the supercontinent Rodinia, reactivation of large failures and crosses of failures (failure of Cabruta and failure of Guri) (Mendoza, 2005), through which is located complex carbonates (impact mount), lamprofiros (0.85 Ga) and kimberlitic eclogitas (0.71 Ga) of broken large, Guaniamo. Also possibly contemporary kimberlitic dikes were located during the reactivation of the fault of Guri, located to the South of La Esperanza. These dikes have been weathered in tropical weather releasing diamond disks, which are transported and deposited together with alluvium in the basin average and low of the ring river (Freites José, 2015)

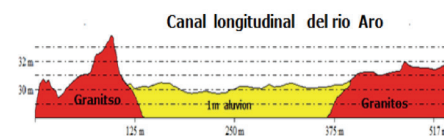


Structural control of the failure of Guri South of hope

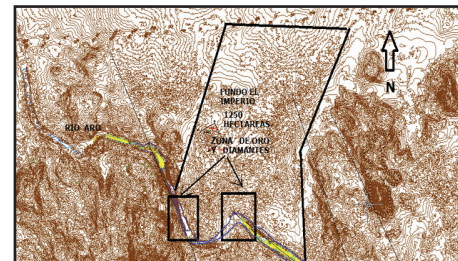
In the stretch of the ring river, which borders on the empire farm, have exploited crystals of diamonds and fine gold with small mining rafts. The relations of production of diamond in Carat are unknown, but the miners informal of the area estimate that in these last months the extraction of gold fine in the Empire farm is of 30 kilos monthly. Gneissas of Imataca complex rocks outcrop within the ring river; they constitute natural geomorphological barriers aligned by faults in NW-SE direction, which serve as entrapment of alluviums containing gold and diamond. Diamoniferous and auriferous alluvium are deposited on a section of the ring river located on the empire farm with a length of approximately 4km, the main areas of concentration of diamonds and gold are found in the meanders of the river bend areas. The thicknesses point of the deposits of diamonds and gold estimated starting from interpretation of orthoimage satellite vary between 0, 44 m and 1 m.



Geomorphological barriers of rocks gneissas granitic alluvium with gold and diamond on the ring river are trapped where. (ORTHOIMAGE satellite)



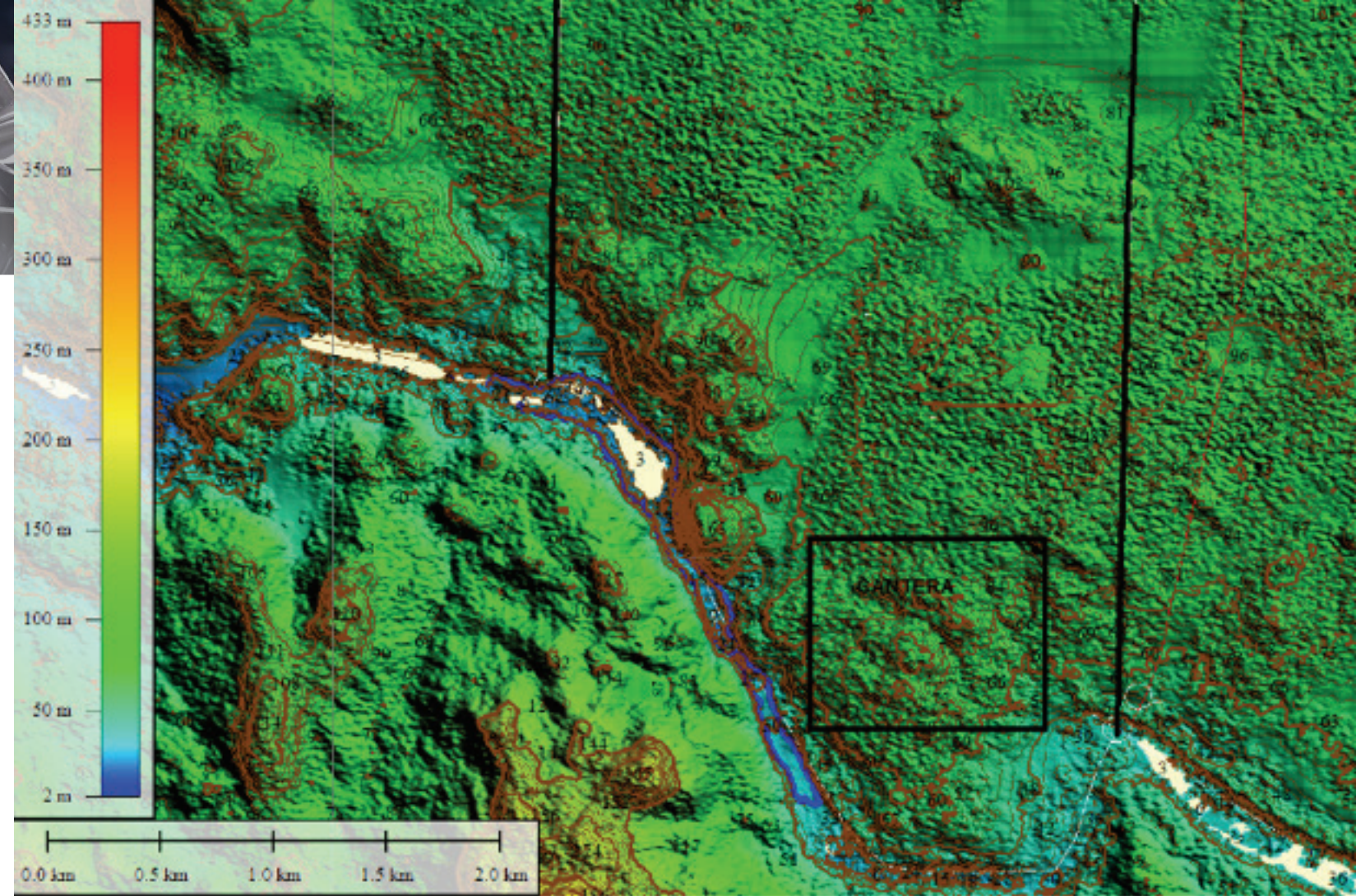
Longitudinal section NW-SE of the channel of the ring river shows the thickness of alluvial deposits that contain diamond and gold (Sector Empire farm).



Topographic map with the location of the points with deposits of gold and diamonds (Sector the Empire farm).

ORIGIN OF THE ALUVIONALES ON THE RING RIVER AURIFEROUS DEPOSITS:

The belt of green rocks (CVR) of the hope, it is located in the region of the ring river in the end Northwest of the province of Imataca, with a surface of some 45 Km of long and 15 Km of wide, has an orientation general East-West; the greater structure is represented by a sinclinoide of trend structural East-West, with folding overlapped and folds isoclinales tight, with a style tectonic similar to the observed in the CRV's Guasipati. The CVR of “the hope” (Figure 7) is formed by volcanic rocks metamorphosed to the amphibolite, and constitute the primary source of gold deposits in areas of sheared (shear zone) and auriferous quartz with pyrite veins. The rocks volcanic are cut by the river ring waters down, which transports the particles of fine gold that is accumulate in the areas meandering of the river and in areas of rocky traps, of this form are originate the deposits of gold, which are exploited by informal miners with small rafts mining.



Presence of other MINERALS

In the area there are other minerals, diamond and coltan in the ring river, deposits of gravel, construction and deposits of kaolin. The Empire Farm is strategic for the extraction of gold and diamond, because the river is the South limit of the farm with a length of 5 km. Some dredges have been installed for the extraction of gold and diamond. In the stretch of the ring river, which borders on the empire farm, it has been exploited crystals of diamonds and fine gold with small mining rafts. The relations of production of diamond in Carat is unknown, but the informal miners of the area estimate that in these last years the extraction of fine gold in the Empire farm is of 30 kilos monthly.

The rocks gneissas of the complex of Imataca are outcrops within the ring river, these constitute barriers geomorphological natural aligned by failures in the address NW-South/East, which serve of entrapment of alluvium that contain gold and diamond. The diamond alluvium and gold are deposited on a section of the ring river located in the Empire Farm with a length of about 4km. The main areas of concentration of diamonds and gold are found in the areas of curvature of meanders of the river. The thickness point of the deposits of diamonds and gold estimated starting from interpretation of orthoimage satellite vary between 0, 44 m and 1 m.



CONCLUSION

In the lands of the Empire farm is evident the existence of two potential areas of granite, gold, diamond and gravel whose classified as possible reserves were estimated at 1.126.362 m³. However, further to the Northeast near the entrance to the farm is another potential area of these minerals that it is possible that the reserves increased to 2,000,000 m³. In addition to deposits of these minerals already appointed in the area arenas (recent sediment) deposits are found in areas of depression that can also be used for the production of asphalt mixtures.

Without a doubt based on all these studies, Bolívar State, specifically on the empire farm a high potential for development not only in the field of mining, but also in the development of many other tourist both resources is exploration, that's the slogan that VCTM-GEO International. ZM, C. A. and Georgia as allied together with Venezuela, countries must carry, the integration of both cultures, both countries rather than trade, is to promote the development and improvement of the lifestyle of a community offering jobs and citizens and producing great opportunities of growth to an entire region.

A BIT OF GEORGIA



Being a sovereign State within the region of Eurasia in the Caucasus, Georgia is one of those countries more beautiful to visit that not is mentions followed between the recommendations of travel. Located at the intersection of Asia and Europe, this country is surrounded by the Black Sea to the West, by Russia to the North, by Armenia and Turkey to the South, and by Azerbaijan to the Southeast. The country spans approx. 69.700 square kilometers, and has a population of at least 5 million people.



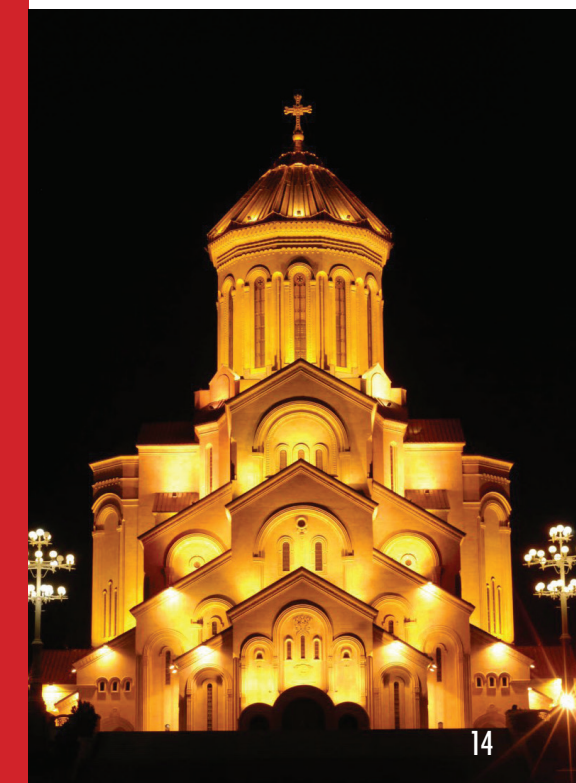
Flag of Georgia

Wonder geographical

Georgia is characterized by being a country very hilly, divided in halves this and West by the mountain range of Likhi. Previously, these halves had their own names: Colchis was the western section, and Iberia this section, but this then was abolished in favor of a designation in particular for every city, district, and County within the country.

Due to the vagaries of nature, several mountains separating the region of Svaneti from the rest of the country, so the inhabitants of this area have to travel several kilometers if they want to visit the village's side.

As mentioned previously, Georgia is organized geographically throughout much of the Caucasus Mountains; with the mountain chain of the Great Caucasus delimiting the northern border of the country and making that the Georgians were forced to construct tunnels, as well as the Roki tunnel between North Ossetia and South Ossetia, to gain access to Russian territory.



REFERENCES

- 1 The name of Georgia in local language is Sakartvelo and means land of the kartvelos. The kartvelos are an ethnic group from which the Georgians are part also. The origin of the name is, probably, a former pagan Chief.
- 2 Georgia lived its golden age between the 11th and 13th centuries. During that period the Kingdom reached its maximum splendor, cultural, economic, political, and religious. The sovereign more important was David "The Builder". Under his leadership, almost all the territory of the Caucasus came to form part of Georgia; his power was so great that during his reign he could deal with the Byzantine Empire of the same. One of the milestones of the life of King David was cast to them invading Turkish of the country in 1121.
- 3 Georgia recovered the independence in the March of 1991 after the fall of the USSR.
- 4 Georgia recovered the independence in the March of 1991 after the fall of the USSR.
- 5 K'akhaber K'aladze was a world famous footballer. He was captain of the national team for many years and the only Georgian player who won the Champions League.
- 6 The Georgian alphabet is one of the 14 oldest and is composed of 33 letters.
- 7 Men greet each other cheek and cheek or giving a kiss.
- 8 Tbilisi comes from the word "tpili", which in Georgian means hot. The capital comes up some sources thermal -indeed, one of them moments more remarkable of the Center are precisely them ancient baths thermal.
- 9 In Georgian do not there is distinction between gender female and male.
- 10 Best known dishes of Georgian cuisine are the khinkali, some tortellini giant stuffed and kachapuri, a grease bomb based on bread, cheese, butter, egg and more butter. The weirdest food, on the other hand, is the churchkhela, a stick of a centimeter in diameter by about 20 cm long, equal in everything to a candle. Actually, it is of nuts or almonds covered by a layer of juice of grape.

VENEZUELA

fertile land

Venezuela is located to the North of South America with its coastline bathed by the Caribbean Sea. It is a country of beauties and contrasts.

THE RICH ORE

There are mineral deposits practically in all the national territory. There is greater exploitation and industrial development in the States of Bolivar, Zulia and Barinas.

Venezuela is a country endowed with a large concentration of resources natural. Among those resources, we have had the great opportunity of having vast mineral reserves.

Deposits of lithium, beryllium, magnesium, aluminum, potassium, titanium, vanadium, chromium, manganese, iron, cobalt, nickel, copper, gold, zinc, zirconium, niobium, molybdenum, Tin, antimony, barium, mercury and lead are present in different parts of the national territory. Also present are some minerals less common, classified by scientists as elements of rare earths, for example, thorium and radioactive uranium.

OIL

In Venezuela there are 5 accounts sedimentary where find them major deposits of petroleum of the country. These are it has Maracaibo-Falcon, with an extension approximate of 82,000 km², it basin Eastern that is it largest with more than 153,000 km², it basin Barinas-Apure that covers them 87,000 km², the basin Tuy-Cariaco, with a surface of 18,000 km² and cover mostly by the sea, the basin of the girdle oil of the Orinoco with an area of 55,000 km² approximately.



Flag of the República Bolivariana de Venezuela



Shield of República Bolivariana de Venezuela

- The logo type that identifies to the oil national PDVSA, was inspired in an old petroglyph that symbolizes a Sun decorated, engraved in the stone "Guarataro", located in the population of Caicara of the Orinoco in the State Bolivar.
- The House of the mail of the Orinoco in Bolivar, was where was born the first newspaper in Venezuela in the year of 1818, printed by the same Simon Bolivar.
- Some rivers in this region have a reddish tinge due to tannic acid present in the area, and in the depths of these waters may become black.
- Roraima, crowned by crystals of quartz in its peak, referred to also as the glass mountain.
- One of the most representative of Venezuela and neighboring countries expressions occurs in El Callao, mining town located in the Bolivar State where calypso music surrounds all the area.

- A malignant and feared Idol of the tribe pemon serves its name for the national Park Canaima, place where converge the mysticism and its nature, haunting the senses of its visitors. A place formed by a great variety of works of the nature as Tepuis, rivers and sheets.
- The Orchid Island, located water mass in the Carrao River lives up to its name, due to its abundant variety of flowers of the species, to access it you must navigate boat called curiara departing from the port Ucaima.
- Angel Falls is the highest waterfall in the world, consists of 972 meters and is named after its discoverer, a veteran of the first world war Jimmy Angel.
- El parque La Llovizna, situado en Puerto Ordaz se caracteriza por una peculiar niebla que se forma por la abundante caída del agua contra las piedras, debe a esto su nombre.
- Auyantepuy, in the pemon language means "Devil"

BOLÍVAR

"THE FERTILE SOIL OF
OUR COUNTRY"





Magy_DIAMONDS

INTERNACIONAL C. A.

RIF.:J-411091162

Venezuela Cultura y Turismo Mineral Georgia